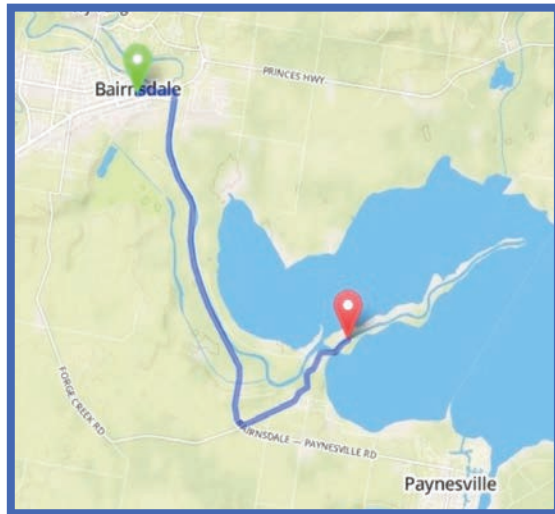




We need to tread carefully on this easily destroyed environment. Conservation works have been undertaken to repair some of the damage caused by vehicles. Trees have been planted to give strength to the banks. Rubbish left behind poisons the land, the water and the experience of simply being there.

Park your car, walk and watch. Enjoy this special place and all that it has to offer.



Mitchell River Delta Silt Jetties

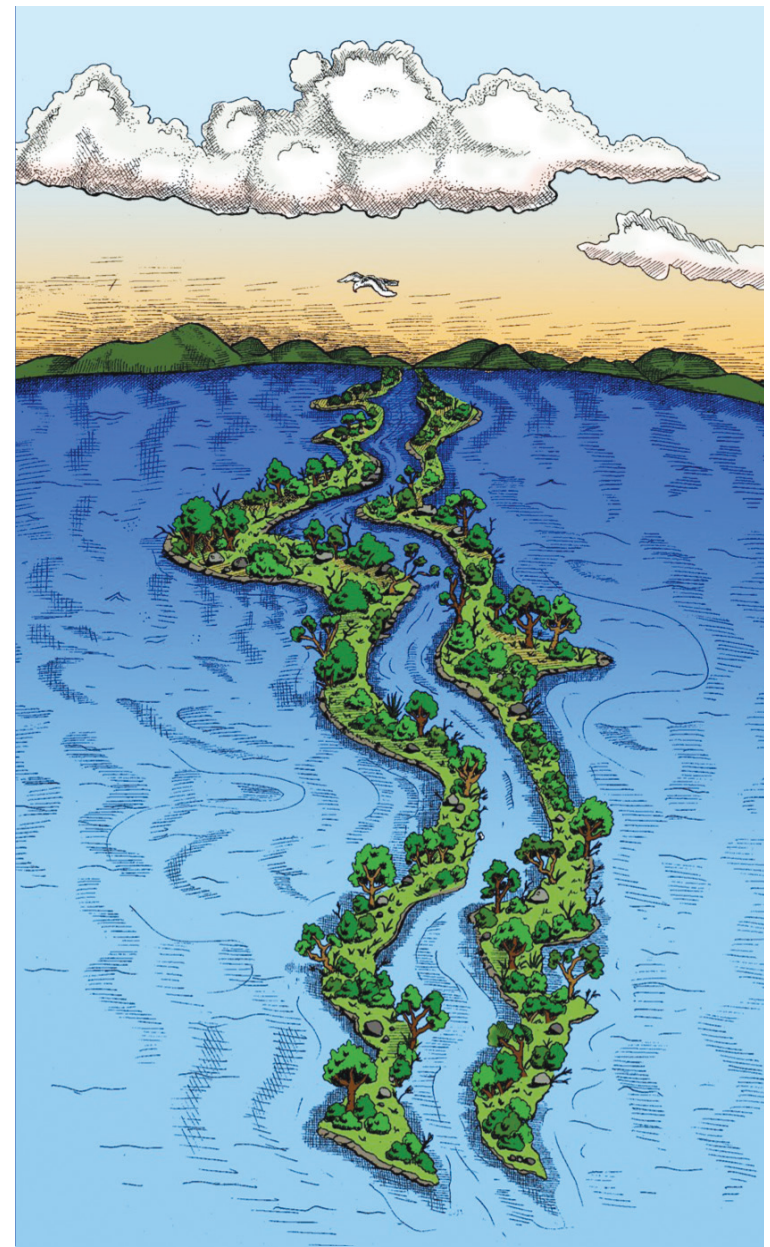
Their significance for us all



MITCHELL RIVER SILT JETTIES

Their significance for us all

Printed on recycled paper, using solar power, preserving our environment
by Black Rainbow - Artwork by J. Kidd.



The Mitchell River delta and its silt jetties, is one of the world's most significant 'finger' deltas and 6,000 to 10,000 years old.

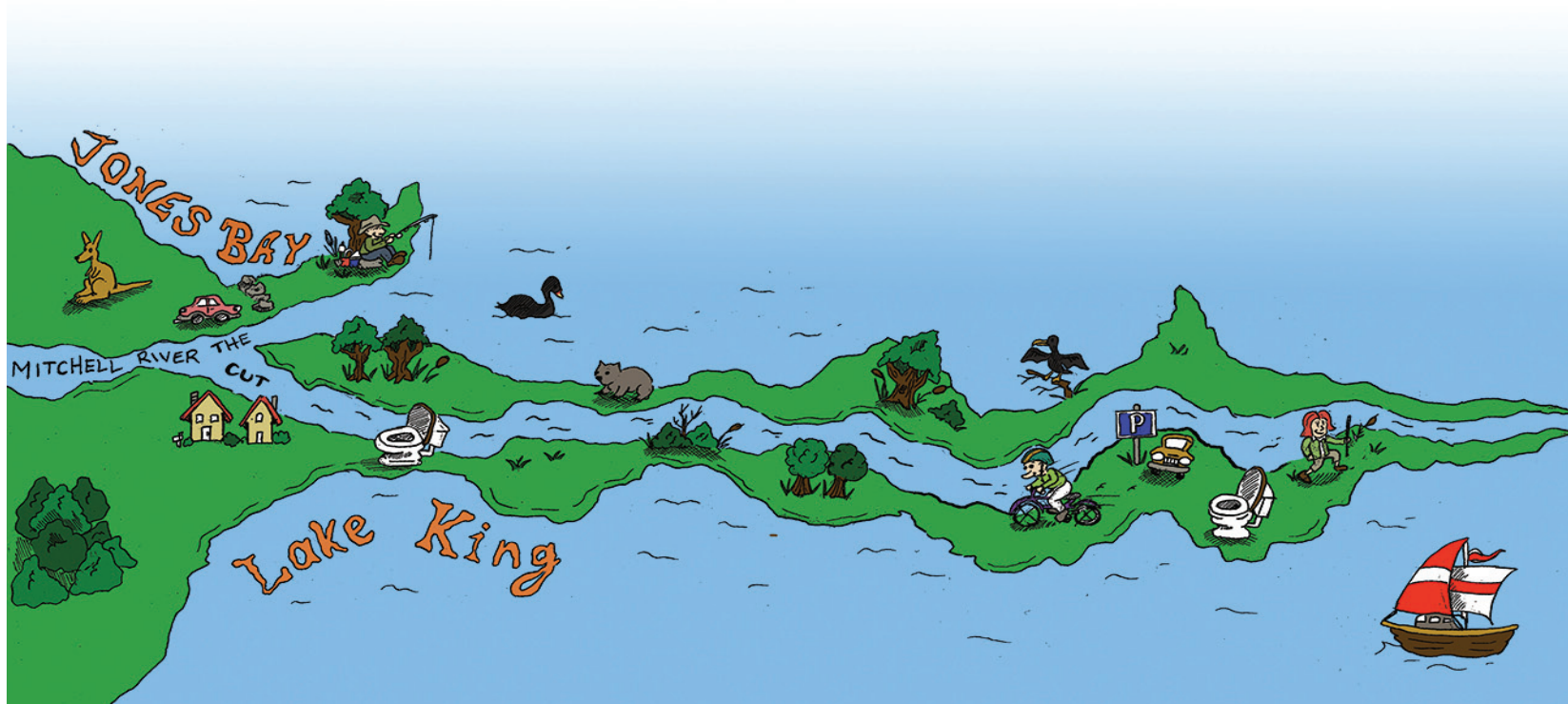
When the Silt jetties were first mapped in the 1840s, they were longer (covering twice their current area) and much simpler in outline. Changes in water salinity, subsequent dieback of shoreline reeds and removal of other natural vegetation have all resulted in water and wind erosion. Had they been left in a natural state, the silt jetties today would be a series of separate islands. They were rock walled together several years ago to keep their shape and length. This fortification has not been without effect on the environment, particularly for rakali (native Water-rats) and shorebirds.



People treasure this place for its beauty and tranquillity, for fishing, bird watching and the appreciation of an amazing 'natural' wonder.

We share this environment with a variety of birds, fish, mammals, reptiles and insects. Look out for the Little Tern and Fairy Tern in summer and swans, cormorants, egrets, ducks and pelicans all year round.

You may even see the Buff-banded Rail, generally a shy, ground-living bird which inhabits this moist and fragile terrain. Or overhead the graceful Black-shouldered Kite surveying its home-land.



Visit loveourlakes.net.au
and fogl.org.au
to find out more