

## In This Issue

<i>Tambo Bluff</i>	1
<i>Reports</i>	2
<i>Sea Hare</i>	3
<i>Metung Bushland Reserve</i>	3
<i>Liaison with Lakes Taskforce</i>	4
<i>What's On</i>	3
<i>Canoe Trip</i>	2 & 4
<i>Silt Jetties</i>	4

## Contact Details

**President**  
**David Ellard**  
[president@fogl.org.au](mailto:president@fogl.org.au)  
**ph: 03 51562175**  
[www.fogl.org.au](http://www.fogl.org.au)

**Secretary**  
**Maurice Burns**  
[secretary@fogl.org.au](mailto:secretary@fogl.org.au)  
**ph: 51 562008**

**Address**  
**PO Box 354**  
**Metung**  
**Vic 3904**

## Tambo Bluff Landcare/Coastcare

This is the first in a series of articles we will run about the Landcare groups that operate within our area of the Lakes, their aims and what projects they have been involved with.

The Tambo Bluff Landcare Coastcare group (TBLC) formed in 1992 and the group area covers 1,221 hectares. This area is a promontory situated on the eastern shore of Lake King, in the Gippsland Lakes, approximately 30 kilometres east of Bairnsdale.

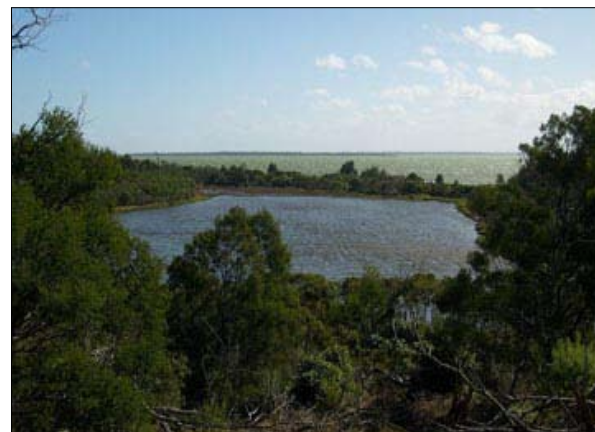
TBLC's basic aim is to protect and enhance the flora and fauna of Tambo Bluff for the benefit of all.

Past projects have included control of blackberry and other weeds, revegetation and monitoring of water quality in Dolphin and Bluff Lagoons (a rare freshwater lagoon fringing the Lakes). More recently activity has been curtailed as the group waits for major infrastructure changes (roads, water and sewerage). These works will no doubt result in the need for significant projects for the members of the group!

If funds are sufficient, they plan to commission a flora and fauna assessment to be done by a registered ecological land management company. They would thereby acquire a definitive document underpinning any future work they may undertake.

Hot off the press and a significant win for the group concerns the soon to be legislated Planning Scheme Amendment C68 'Coastal Landscapes and Urban Settlement Plans'.

The Tambo Bluff foreshore and wetlands were to be excluded from the Significant Landscape Overlay, but TBLC challenged this and the Planning Panel is now advising they should be included.



*Dolphin Lagoon*

TBLC maintain a community website at [www.tbtc.org.au](http://www.tbtc.org.au) for your perusal.



# President's Report

## Annual General Meeting

The AGM will be held at Bairnsdale Bowls Club Wednesday 5 August with dinner at 600 p.m. followed by a guest speaker and then the meeting at 7.45 p.m. The speaker is Alan Broughton, an organic farmer whose experience as Vice President Organic Agriculture Association and his knowledge of the value of organic practices in reducing detrimental nutrient run off and its effects on catchments should prove of interest to our group. Alan is currently employed in land management on the Strathfieldsaye estate where he is involved in implementing best practice management of runoff from the property with its large frontage to Lake Wellington.

## Annual Elections

The committee of management is about to complete its term of office. with elections to be held for the new executive and general committee in late July early August. The committees has worked together to successfully plan and implement the FOGL program over the past 12 months A feature this past year has been a greater sharing of responsibility with all committee members taking leadership in specific areas.

## Current Committee

President David Ellard  
Vice-President Nancy McMurray  
Secretary Maurice Burns  
Treasurer Unfilled (Maurice acting)  
Committee Members Anne Schmidli, Jenny Dalgleish, Peter Johnstone, Bill Cotter, Wendy Parker (Minute Secretary)

While retiring members are eligible for re-election all FOGL members are encouraged to consider this level of involvement. Jenny Dalgleish and Jo Hope who have performed an excellent service in producing the quality FOGL newsletter will not continue in this role. Any members who have an interest in this area are asked to consider this important function.

This past year we have seen specific interests developed in relation to the Silt Jetties, MacLeod Morass, Project Burragurra, the No Butts campaign, the reserve at Nungurner and more recently the Metung Bush Reserve. In addition there has been a large commitment in responding to draft government papers and involvement in the Gippsland Lakes Forum through our affiliation to Habitat Network East Gippsland.

Our sub committee organisation covers

projects, works, activities, membership and public relations. was expanded to include an area of research and issues. Almost all of the work associated with the sub committees and specific interest projects is facilitated by committee members so the efforts of this small group provide the driving force for many FOGL successes.

The extent of this involvement must be measured so that FOGL is effective in its commitment. We have many proposals for activities, working bees etc (see below) which will be realized if we have people to assist in planning, not necessarily as committee members but also through working on specific projects. However, please think about your own role or that of someone whom you think may be worthy of nomination and set about getting the nomination process happening.

Note that nominations for positions close prior to the Annual General Meeting with only unfilled positions being open for nomination at the meeting. This means that if you wait until the meeting to be nominated you may miss out!

Formal notices regarding the AGM and elections will be forwarded directly to all members.

## Member Representation

An outcome of the Gippsland Lakes Forum because of concerns raised regarding communication and involvement of the community has lead to the Gippsland Lakes Task Force inviting Habitat East Gippsland to provide a representative to become a member of the task Force. Wendy Parker has been appointed to this position (see Wendy's report for details)

FOGL was invited to provide a representative for the MacLeod Morass Working Group which will review planning for the treatment plant and Morass to provide direction to the EPA. Bill Cotter, formerly president of the friends group for the MacLeod Morass who continues his interest through FOGL is our representative

## Can You Help?

Organising working bees particularly in areas with only boat access along with competing with the vagaries of weather, overland transport etc can prove difficult. For some members, weekends are not suitable. In discussion with Parks we have proposed revisiting the more specialised and flexible arrangement where small groups of 2-4 people could make themselves available to work on

some projects e.g. Lune Beeuke Track. If we had a list of possible starters, people could be contacted to help out so please let us know if you are interested or want more information

## Activities

As a result of Committee discussions and consultation with Parks Victoria the various activities are planned and are outlined in 'What's On'. Watch out for further details as they are finalised

Other proposals for activities, to be put to new committee include:

Speakers: Waterwatch, Parks, CMA, Landcare/Coastcare, flora/fauna experts

Excursions:

\* Visits to projects (completed or in progress) in areas around the Lakes eg Tambo Bluff, Nungurner rainforest.

\* Visits to parks and Reserves around the Lakes. eg Rotamah Island, Sperm

Whale Head, Nyerimilang, Lakes Entrance, North Arm

\* Canoe and boat trips

## Culture in the Catchment

On April 9<sup>th</sup> seven members of FOGL experienced a memorable day's excursion on Lake Tyers, starting at Nowa Nowa launching ramp.

The canoe journey was led by Rob Andy, from the Tatungoloong Gunai/Kurnai people of East Gippsland and supported by Rod Willersdorf in the safety boat. Rob told the story of the catchment from an Aboriginal perspective, explaining how the area was utilised by the indigenous people for thousands of years. After a 2 hour, gentle paddle, a delicious lunch was provided at the Yelens Studio Gallery on a hill overlooking Lake Tyers.

It was a splendid outing and we encourage those of you who have not done the tour to take advantage of such a great opportunity to learn ore about our local area. And, it's free!

For further information go to [www.egcma.com.au](http://www.egcma.com.au) or call (03) 51 503568

(see photo P 4)

Jenny Dalgleish

## What is This Creature ?

Recently, FOGL member Annie Marshall spotted 2 of these unusual, slug-like creatures at Shaving Point and asked Peter Johnstone what they were. Here's Pete's response:

The creature in the photos is commonly called a "Sea-Hare". This is based on its appearance of the horn like structures that can look like rabbit ears. They are found in full marine waters.

There are several species of Sea-Hare although only one common form found in Victorian waters. I have seen them in the shallows near Lakes Entrance and Port Phillip Bay. I am unsure of the exact species found



at Metung, but it's possibly *Aplysia dactylomela*. Most Sea-hares grow to 150mm however one species will grow to 600mm. All exude a purple ink when disturbed.

They are a close cousin to Nudibranchs and Bubble Shells. They are known to eat seaweeds, sea-grass and blue-green algae, usually at night, as often they hide under the sand during the day. If picked up or pushed they may exude a purple-black ink. They are not poisonous! If found, please place back in the water.

(Ref. 'J.G. Edgar 'Australian Marine Life')

## Metung Bushland Reserve

On Tuesday 14<sup>th</sup> April representatives of Friends of Metung and FOGL met with Yasmin Aly and Matt Hollond (Parks Vic) to discuss a plan to upgrade this 3.95 hectare Reserve in the heart of the village. It is located within the parameters of the Primary School, Stirling Road, Park Street and Christmas Street. The Reserve is a good example of Limestone Box Forest, containing large Coastal Grey Boxes and Blue Boxes. There is also evidence of Warm Temperate Rainforest.

### Agreed outcomes, following the meeting

- Friends of Metung to be supported by FOGL and Parks Vic in the project
- Objectives to be in line with recommendations by Emma Orgill in her suggested management plan.
- Notification of our intentions to relevant groups eg Primary School, East Gippsland Water, GEGAC, CFA, S P Ausnet etc
- Engagement of the local community in the project, initially by a community clean-up and information day.
- Closure of tracks with bollards/gates.
- Request to Gippsland Water to put up a barrier/gate on their pipeline track.
- Erection of signage.
- Removal and control of weeds by contractors and volunteers.
- Revegetation using indigenous species either grown by volunteers or approved Parks growers.
- Provision of informal seating at various points throughout the Reserve

Parks Vic will support the project in whatever way they can, but they have no funds for the projects.

Where necessary, funding for the above projects will be achieved by grants, applied for by Friends of Metung or raised within the community.

### Action to Date

- Letter written to EGWater outlining the project and requesting barriers on the pipeline track. These have since been approved.
- Letters to relevant groups informing them of the project.
- Contact with Metung Primary School and resulting involvement in the project.
- Letter of support from Metung Bloodhounds, with promise of financial assistance.
- Email to EGRCMN informing them of the project and asking for their support.
- Article in Bairnsdale advertiser in Volunteers Week.
- Publicity in the village and further afield for the Community Day
- Community Day to be held on Sat 13<sup>th</sup> June, from 10 am to 1 pm, followed by Sausage Sizzle. The main aims of the day are to increase community awareness and to do an initial clean-up.

## What's On

**August 2** National Tree Day (School Tree Day is Friday 31 July)

**August 5** AGM

**November** Coastal Park Open Day Boole Poole Peninsula

**Spring/Autumn** Planting of Reserve at Silvershot Landing (Timing is Subject to availability of suitable Plants) **To be confirmed**

Completion of Lune Beeuke Track

Plover and Oyster Catcher Count

Weed Spotter Training (sometime in spring)

## More Planting at the Silt Jetties

Another planting day was held at the north side of the Silt Jetties on May 18<sup>th</sup>. Twelve members of FOGL and Matt Hollonds from Parks Victoria put in about 400 plants, mainly Boobiallas but also Casuarinas, Eucalypts, Melaleucas and Lightwoods. Some of the previous plantings had been lost through inundation in last year's flooding and these new plants replaced those.

After 3 hours of hard labour, the workers were rewarded with a fine sausage sizzle!



## Liaison with Lakes Taskforce

Following the successful Gippsland Lakes Forum organised by Habitat Network East Gippsland (HNEG) in November 2008, representatives from each of the groups involved in the organisation, including FOGL, met with Chris Barry, CEO of the Gippsland Lakes TaskForce. This meeting, which took place in March, was to follow up the offer from the TaskForce, of establishing better communication with the Gippsland Lakes community. The TaskForce agreed to have a HNEG representative at its future meetings. This representative would not be a Ministerial appointment and would not carry voting rights. However, the representative would take issues from HNEG for discussion at the meetings and report back on outcomes.

Wendy Parker, HNEG Coordinator and FOGL member, agreed to be the initial representative.

HNEG had identified a number of recommendation and actions based on issues raised at the Forum and these were presented to the TaskForce at its meeting in Traralgon on April 29. The TaskForce members were very welcoming and positive about the presence of a HNEG representative. The HNEG list of seven proposed Actions were:

- A report on the status of the plans for the management of the Gippsland Lakes, comparing stated strategic objectives with successes or otherwise
- Immediate action to restore wetlands by following up proposals from Roger Bilney (Gippsland Environment Group)
- A detailed list of where TaskForce funding had been spent, the outcomes of the funding program and how successful it had been in meeting the funding objectives
- The need for compilation of already established sources (DSE, EGBOC, BDFNC) re flora and fauna species in and around the Gippsland Lakes
- Establishment of additional, appropriately placed and up to date stream flow gauges on all rivers and streams entering the Lakes. This would enable compilation of up to date stream flow data
- Research and monitoring independent of the TaskForce

The TaskForce asked for more information on a number of these listed actions.

A report has been circulated to HNEG members, asking for further comment.

**Wendy Parker**

### Canoe Trip to Lake Tyers

APPLICATION FOR MEMBERSHIP OF FRIENDS OF GIPPSLAND LAKES PARKS & RESERVES INC.

I.....(name of Applicant(s)) of .....(address)

Ph. .... Mb. .... E-mail(s) ..... desire to become a (state category of membership - see below) ..... member of the Friends of the Gippsland Lakes Parks and Reserves Inc.

In the event of my admission as a member, I agree to be bound by the rules of the Association for the time being in force (can be viewed at <http://fogl.org.au/forms/rules.pdf>).

.....Signature of Applicant Date .....

Membership fees (to 30 June 2010):

Adult \$20, Family \$35, Organisation \$100, Concession \$10 (Healthcare, Pension, Student)

Please complete Membership Form and enclose membership fee (cheque or money order only) then post to:

The Secretary, Friends of the Gippsland Lakes Parks and Reserves Inc.

P.O. Box 354 Metung VIC 3904